



185 Trolley

NYLON FLANGE ROLL ADVICE WHEN TO CHANGE
JULI 2020 VERSION: BHM202007A



Berg Hortimotive
Burg. Crezeelaan 42a
2678 KZ De Lier
The Netherlands

Phone +31 (0)174-517 700
info@berghortimotive.com
berghortimotive.com

Service
Phone +31 (0)174-613 293
service@berghortimotive.com

WHEN IT IS TIME TO REPLACE THE NYLON ROLL:

Each tread from which kind of material, is subject to wear.
The material which is used for the nylon flange roller has a few favorable properties, which are important for using on the heating pipes.

- Rolls noiseless
- Low rolling resistance
- Reduced load on the heating pipes
- Acceptable durability

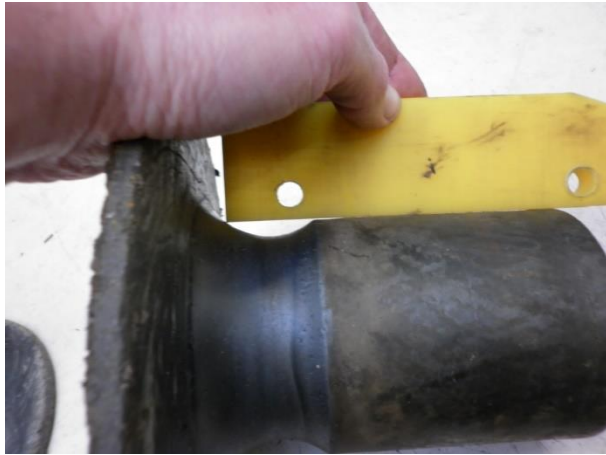
With this information we give an indication when it is time to replace the driven roll tread.



Wear is about 1mm, the roll are used for some time. Normally maintenance, inspection on rope.



Wear is 2 – 4 mm, the roll is still good.
Normally maintenance, inspection on rope.
To change the roll is not necessary, do not create unnecessary cost!



Wear is 5 mm or more.

Exchanging the roll is necessary!



The roll has flat spots caused by blockade.

Exchanging the roll is necessary!